

BURLINGTON SCHOOL DISTRICT



June 13, 2016 Staff Strategic Planning Day AGENDA
(also shared as a Google Doc)

7:45-8:15 Settling in, coffee

8:15-9:00 Framing of the day (**Yaw Obeng**)

9:00-10:30 On being a reflective practitioner process (**Daniel Baron**)

10:30-10:45 Strategic Planning Process for the Remainder of the Day (**Yaw Obeng**)

10:45-11:00 Ed Camp Intro (**Victor Prussack**)

11:00-11:30 BREAK with snacks provided (grab and go)

11:30-1:00 Round I Sessions are attended (see Priority Areas/Classroom Chart)

1:00-1:50 LUNCH in cafeteria and front lobby

2:00-3:30 Round II Sessions are attended (see Priority Areas/Classroom Chart)

3:30 Wrap-up (via the intercom)

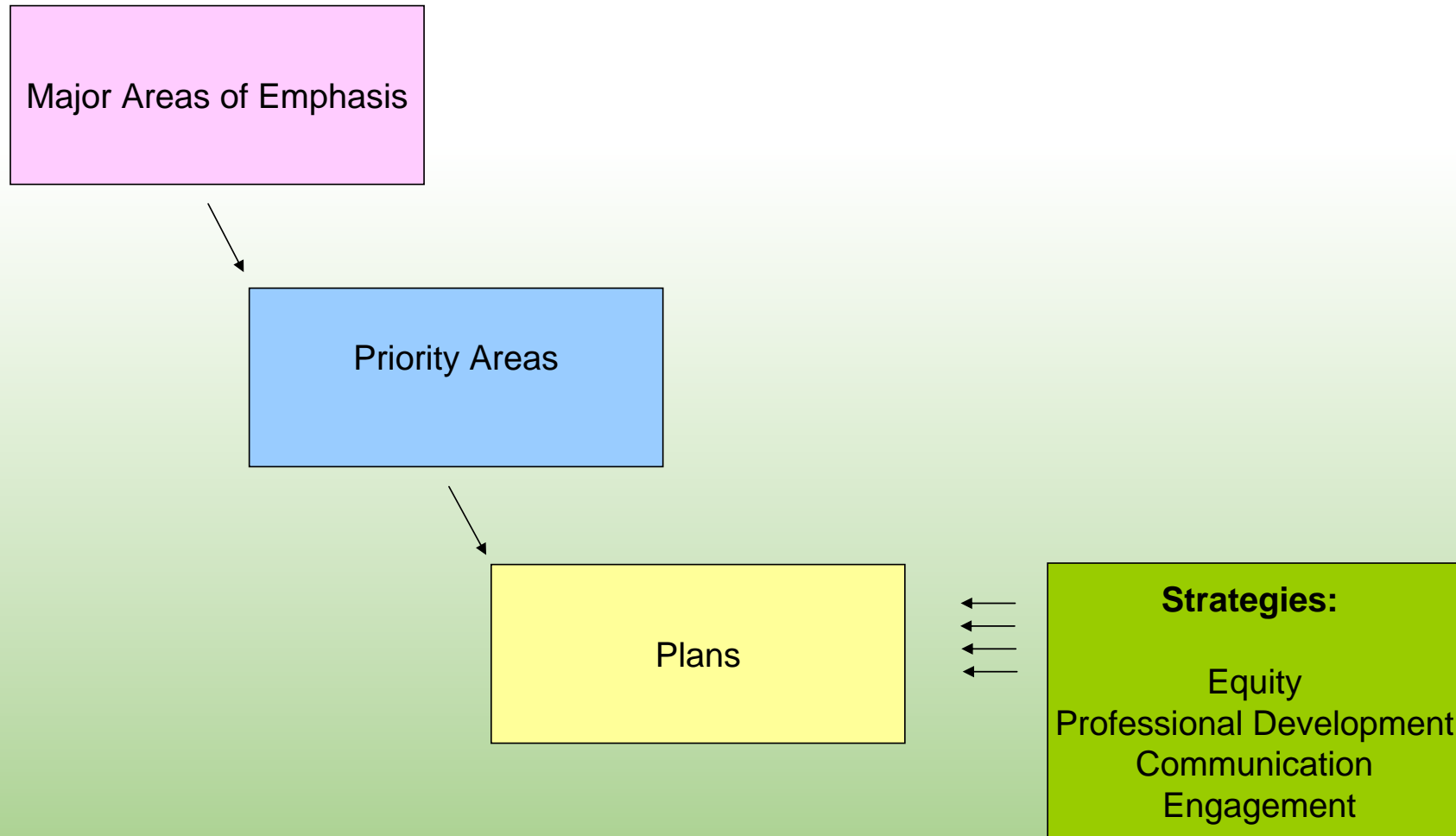
Framing and Importance of the Day



Strategic Plan's Four Major Areas of Emphasis

- Equity of Access, Opportunity and Outcomes in Education
- Inclusive Teaching and Learning
- Community and Climate/Culture (for students, teachers and families)
- Sustainable Finance and Facilities

What does the Strategic Plan Look Like?



On Being a Reflective Practitioner

Challenges

Orlando

Equity Lens



ABILITY

FAITH

GENDER FLUIDITY/SEX

RACE/ETHNOCULTURE

SEXUAL ORIENTATION

SOCIO-ECONOMIC

Native American/ Indigenous Peoples

Micro Lab Prompts

- Why did you choose to become an educator?

Micro Lab Prompts

- What is a core belief that you hold most dear? One that you are unwilling to compromise? One that you would go to the wall for?

Micro Lab Prompts

- What can BSD do to support you in giving your best to each student?

Over the last four years, BSD has had a series of challenges/crises that has affected the District's ability to be respected and trusted by many teachers, administrators and staff.

What can BSD Administration do to regain trust and to build trust with you?

Of all of the issues that you have confronted over the last four years, tell a story about what issue has had the greatest impact on you as a teacher/administrator/staff member and how it impacted your own practice?

Success Analysis Protocol

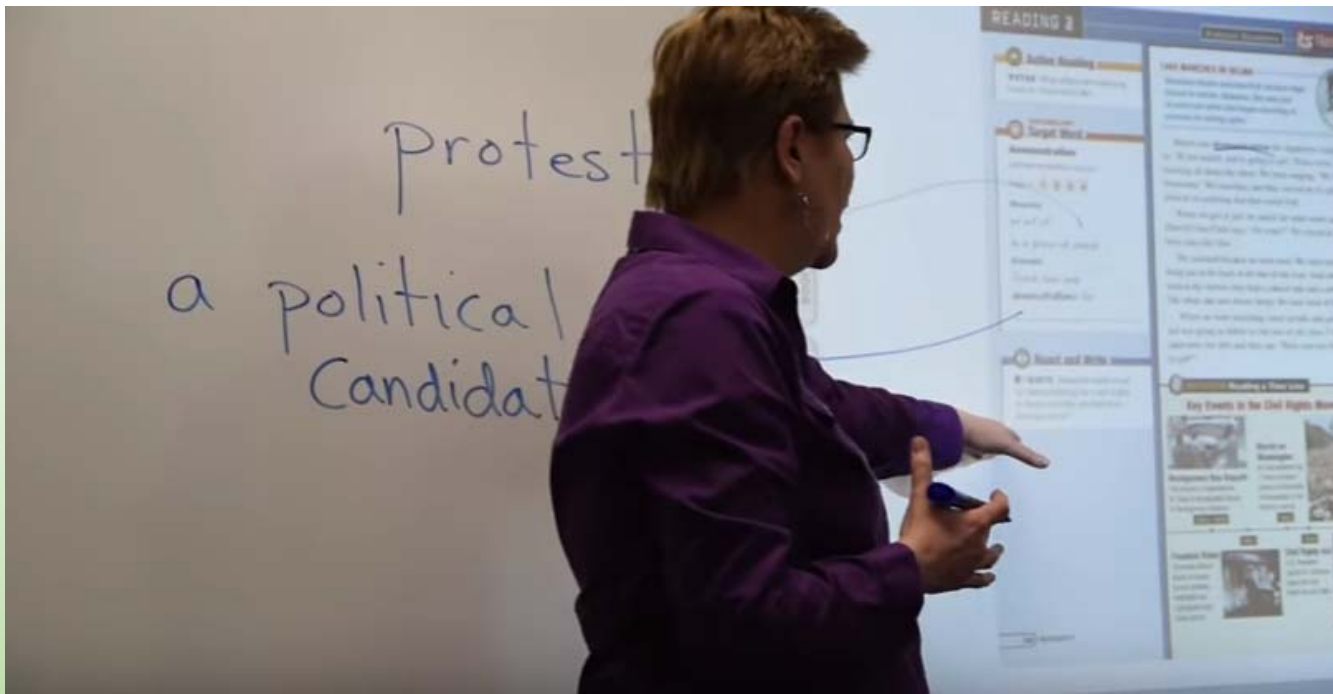
Google Triad Sharing Form:

<http://tinyurl.com/zso53sp>

- Mission and Vision (Session 1, Room D203)
- Core Beliefs/Graduate Expectations (Session 2, Room D202)
- Special Services Parent Forum (document in each room)

Proficient, Confident Readers

Produced by Lynn Hefferon and Sean Hirten



Ed Camps

- +/- 30 Priority Areas, some with multiple topics
- Minimum 10 participants
- Maximum 19 participants (20 makes two groups)
 - whereby if more you split into two or even three sections of this Priority Area

Ed Camps

- We have blocked out extra rooms as needed
- Two facilitators and one recorder
- Reporting Form (emailed link to everyone as view only).
 - Recorder makes a copy and shares with others in your group session as well as with superintendent@bsdvt.org

BURLINGTON SCHOOL DISTRICT



June 13, 2016 Staff Strategic Planning Day AGENDA
(also shared as a Google Doc)

7:45-8:15 Settling in, coffee

8:15-9:00 Framing of the day (**Yaw Obeng**)

9:00-10:30 On being a reflective practitioner process (**Daniel Baron**)

10:30-10:45 Strategic Planning Process for the Remainder of the Day (**Yaw Obeng**)

10:45-11:00 Ed Camp Intro (**Victor Prussack**)

11:00-11:30 BREAK with snacks provided (grab and go)

11:30-1:00 Round I Sessions are attended (see Priority Areas/Classroom Chart)

1:00-1:50 LUNCH in cafeteria and front lobby

2:00-3:30 Round II Sessions are attended (see Priority Areas/Classroom Chart)

3:30 Wrap-up (via the intercom)